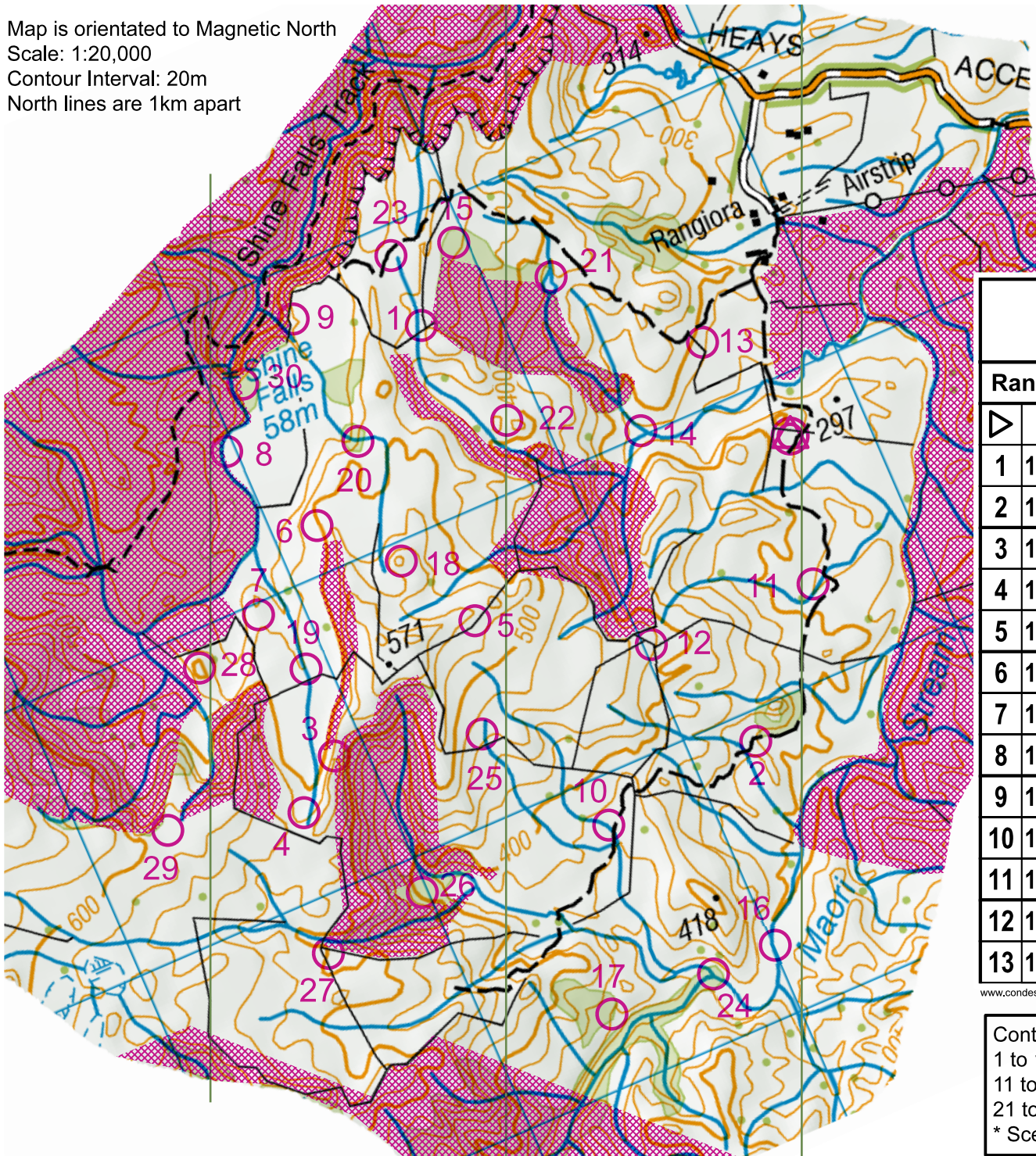


Map is orientated to Magnetic North
 Scale: 1:20,000
 Contour Interval: 20m
 North lines are 1km apart

Rangiora Trust Rogaine

2021 Deborah Turner Memorial Rogaine
 2021 HB Sec School Rogaine



Rangiora Trust Rogaine		
Rangiora		
▶		
1	110	A Cliff Face
2	111	Top of Marsh
3	112	A Rock Track
4	113	A Dam
5	114	A Gate
6	115	A Rewarewa Tree on the ridge
7	116	Saddle
8	117	A Copse
9	118	A view of the Falls *
10	119	At foot of a 3m Cliff
11	120	In the Manuka
12	121	The Fence Junction
13	122	North side of Plantation

14	123	Creek Junction
15	124	A Kowhai Tree in a clearing
16	125	A log by the stream
17	126	Top of a Spring
18	127	A Rock at the Top *
19	128	A Bend in the Creek
20	129	A Mahoe in the Creek
21	130	The Dam - North Side
22	131	Saddle
23	132	A Mahoe on a Rock
24	133	The Creek Junction
25	134	A Rewarewa by the Dam
26	135	A Nikau in the valley
27	136	In the yards Northern end
28	137	Top of Knob
29	138	A Fence Junction
30	139	A fence corner top of the falls

www.condes.net 10.2.12 Hawkes Bay Orienteering Club

Controls:
 1 to 10 = 10 points
 11 to 20 = 20 points
 21 to 30 = 30 points
 * Scenic

Emergency Contacts:
 Geoff Morrison 022 066 8640
 Alan Maxwell 027 208 3860