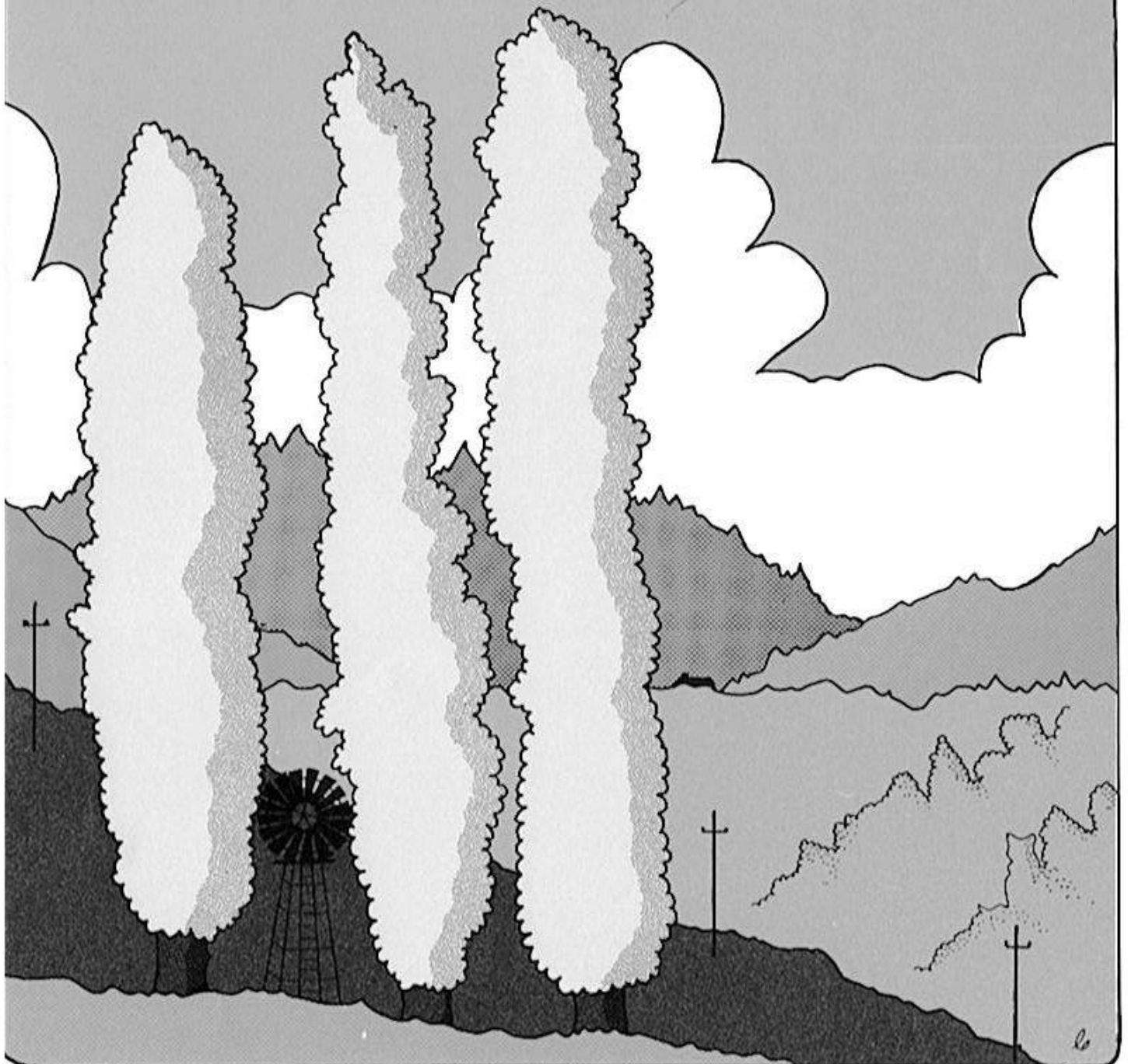




COMPASS POINETS



VOLUME FOUR

JUNE 24 - AUGUST 18 1990

All correspondence and newsletters to Club Secretary

Dave Fisher
26 Trent Street,
Taradale,
Napier.

(070) 448-282

C O N T E N T S

Club News	Pages
Results: McNeil (OY 3)	
Central	
A & P Showgrounds	
Te Mata	
Coaching Weekend	
Night Relays	
O.Y. Points	
NZOF News	
Letters	
Entry Forms	
Fixtures List (Coming Events)	

EDITORIAL

The promotional events this year have been very successful and the membership is climbing again. We have had requests from schools and church youth groups to run special orienteering events, sometimes during the week. It's great to see more people out on the courses. The future is looking exciting with the Makpac Kaweka Challenge in February 1991, the Queen's Birthday 3 day badge event (we think!) in 1991 and the A.P.O.C. Multi Day event in 1994.

Ed.

NEW MEMBERS

Welcome to our new members:

Maurice & Joan Nathan
Roger Stone

(we look forward to reading your pen portraites.)

TRAVEL:

Best wishes to Maurice and Linda Lloyd who are off to Australia for the Multi-day event which includes the N.Z. v Australia Challenge. Returning just before Labour weekend they could possibly take out their respective N.Z. titles or quietly hide in the nearest hot pool.

N.Z. CHAMPS:

This is the time to plug the N.Z. Champs, which this year will be held in the middle of the North Island. Close enough for us to travel too, this event makes a good holiday. If you do not go to any other badge events, this one is worth going to. There are courses to suit all abilities and fitness levels. If interested have a word with an old lag about it.

INTERCLUB CHALLENGE:

Another plug for the Seafield Road event. This is now the challenge between our club and the Palmerston North Red Kiwis, as well as our O.Y. 5. To win the challenge we need all members out on the rightful course for their age. That means on your own of course, to qualify for points. It's years since we won this trophy, so how about it on the 14th October.

MASTERS GAMES:

Orienteering will be included in the N.Z. Masters Games to be held in Wanganui, February 5 - 10, 1991. The event is being organised by the Red Kiiws and will probably use the Lismore map. All grades will be A grades, the lowest grade being M & W 30+. Club secretary has entry forms for an 'oldies' that want to go.

MACPAC KAWEKA CHALLENGE

Organising the Macpac Kaweka Challenge for February 16 - 17 1991 with the Heretaunga Tramping Club is underway again. Ted Sapsford has been out into the Kawekas with his track marker tape and white sticks. (Why does he always take a white stick when tramping?)

TE MATA

Last Tuesday afternoon Stewart and Max organised a score event for a Wellington church youth group holidaying in the bay.

PUKENUI ?

Never heard of it? You will get to know it very closely if you come to the Mini Mountain Marathon that Bruce Perry is organising with his brother.

STARTING PROCEDURE

With a big increase lately in attendance at our club events, I feel it is pertinent to look at the way we organise the starting process.

Normally we fill in a clipcard, go to the caravan, pay \$2 for a map, control descriptions and a start time. Sometimes a compass and a little advice. This same person or couple are also timing finishers, checking clipcards, posting up results, and organising control collection !!

The mind boggles, but amazingly up till now it has worked fairly well, we have an event every two weeks, and I think it fair to say most clubs would be surprised at the situation.

However, we do want to enlarge our active membership, and if recent events are a guide we have started to achieve this. The point I want to make is that the starting system described above causes a queue/bottleneck at the caravan, and must be the best way of losing members. Who wants to wait around for half an hour, in the winter, in a queue, with perhaps a couple of energetic children wanting to get 'at it'.

An alternative is to have a starting book or list.

It works like this:

Choose your course, select a time from the book, which looks like this -

TIME	Course A	Course B	Course C
10:30	Dave Fisher	Sharon Mardon	James watson
10:35		Dave Smith	
10:40	Eric Dunbar		Paul McKelvie
...			
11:20	Bruce Perry	Nigel Brown	

Enter your name, collect and fill in a clipcard, including your start time, pick up a control description list, buy a map and plastic bag from the caravan. You now get ready, socialise, eat your lunch. Present yourself to the starter, a few minutes before your start time, who will check your clipcard and off you go on the button.

Clearly if there are a lot of starters the the finish needs some organisation as well, and I don't mean on the day. People need to know in advance.

So who is going to organise it ? I think it falls on the Fixtures Officer and whoever runs the event. Sometimes a family can organise it entirely amongst themselves. Obviously a single person needs assistance.

What do you think ??

Who will try it first ??

Stewart

DESIGN A LOGO COMPETITION

WIN FREE ENTRY TO APOC 1994

The five Wellington Area Clubs, and the Hawkes Bay Orienteering Club are running the Asia Pacific Orienteering Carnival (consisting of eight days of orienteering) in January 1994 and require a logo for the event.

The Design a Logo competition is open to everyone. Entry is free. There is no limit on the number of entries per person. The winner will receive free entry to the APOC 1994 event (worth at least \$100).

The competition will be judged by the APOC 1994 Committee, and their decision is final. Depending on sponsorship, colours and design of the chosen logo may need to be changed slightly.

Entries close Friday, 9 November, 1990. Send your entry to:

Margaret McLauchlan
Secretary
APOC 1994 Committee
11 Paul Street
MASTERTON

NATIONAL JUNIOR CAMP 1990

PRELIMINARY NOTICE

The CDOA has under-taken to run the next Junior Camp for 13 - 16 year olds. The proposed date for the camp is between the 16 to 22 December 1990 and will be held at the Iwitahi Outdoor Education Centre, Taupo.

Application Forms will be sent to club secretaries in September. At this stage of planning, we hope to cater for 25-30 juniors with the cost being approximately \$80 per person. It may also be possible to cater for some Grade orienteers, but they would have to pay the full cost of \$160.

HELPERS ARE NEEDED

Anyone who can or would like to help, please contact Les Warren.

For those who help, there will be NO CHARGE while at the camp.

Types of help required will be:

- | | |
|-----------------------|---|
| TRANSPORT | Some parents coming will have vans, but any help in this area would be appreciated. |
| KITCHEN CO-ORDINATOR | Someone to oversee the preparation and the cooking of meals. I have someone willing to purchase the food. |
| EXERCISES PREPARATION | Several people are required to put out controls. This may suit some of the older juniors who want to join in. |

All enquiries to: Les Warren

4/ 42 Queens Ave

HAMILTON.

PH: 391214(h) 436144(w)

A QUEST FOR CHANGE

The National Championships are a three day farce! How can we let our supreme annual competition be so mediocre? It is absurd to have our national event flanked by futile relays which are meaningless to the majority of competitors who attend the Championships. Relays may be "great fun" to a few competitors, but surely we have not been drawn from all parts of New Zealand to attend a fun event.

Our most popular events by far are the multi-days. Why are they so popular? One of the main reasons is they are individual competition events with a meaningful final result for each individual competitor. I ask this question, How many competitors would turn up to an ordinary multi-day event offering one day as family relays, one day as individuals and one day as grade relays? I'm sure the answer would be very few. So why do we tolerate such mediocrity at our National event?

It's time for a change!

We need to take full advantage of this weekend and offer New Zealand's top talent in all grades the most intense, top quality and meaningful competition possible. A competition and weekend worthy of the title, "The National Championships".

It's time for action!

- (a) Do away with the family relays. (In my opinion these relays would rate lower than a "do it yourself" park event which we try to hold in Auckland once a month.)
- (b) Run the National Relays in conjunction with a district "OY" event or another badge event. Better still, let's do away with them completely.
- (c) Introduce a new format for the Nationals. For example:

Day 1 - two short "O" events, one in the morning, one in the afternoon. These to be held on different parts of the same map.

Day 2 - standard length National event.

Day 3 - multi-day length event.

From the above format various permutations can be put forward, i.e. National title holders could be found from either -

- (i) the single day 2 event, or
- (ii) the accumulated results of all three days - four events, or
- (iii) the accumulated results of three out of four events with day 2 being compulsory.

An alternative permutation could be -

(iv) National titles from the single day 2 event, plus a separate competition with the accumulated results from three out of four events with day 2 being compulsory.

My preference would be permutations (iii) first choice, (iv) second choice. (Both choices would allow event officials for days 1 and 3 to participate in both the National title and separate competition events.)

This article is the first step in a quest for fundamental changes to the format of our National and District Championship events. I'm sure there is sufficient support out there for such changes and I would appreciate any acknowledgement.

Mike Achmore

P.S. Congratulations Central Districts on your decision to hold your Championships over a two day format. Your foresight is exactly what I am hoping to see happen on the NZ "O" scene. Maybe this quest for change will not be such a daunting task after all!



HAWKE'S BAY ORIENTEERING CLUB

NEW ZEALAND

P R Watson
9 Nelson Street
Waipukurau
Phone [0728 88208]

26th June 1990

McNEIL EVENT SUNDAY 24th JUNE 1990

Bruce Perry showed good technique and fitness to comfortably win the third orienteer of the year event in the Mens 17-39 grade. Linda Lloyd just won the Womens 17-39 from the fast improving Catherine Lee.

RESULTS

COURSE A

Mens 17-39

Bruce Perry	1 hour	16 minutes	03 second
Maurice Lloyd	1	23.12	
Peter Watson	1	24.50	
Gavin Shing	2	05.39	
Eric Dunbar	2	12.00	
Craig Anderson	2	23.58	
Wayne Lee	2	41.44	

COURSE B

Mens 40+

Doug Matheson	1 hour	34.51	
Paul Jarvis	1	36.40	
Brian Crawford	1	38.35	
Alan Burke	2	05.16	
Dave Smith	2	06.25	
Ted Sapsford	2	12.50	
Margot Young/Max McEwan	3	23.25	

COURSE C

Womens 17-39

Womens 40+

Linda Lloyd		51.49	
Catherine Lee		52.06	
Caroline Watson		56.12	
Rosalie Adlam		56.27	
Anna McKinley	1 hour	10.10	
Anne Sapsford	1	41.25	
Diane Kyle	1	42.29	
Diane Lucas	1	51.07	
Mac & Ngaire Fisher	2	03.25	
Maurice & Joan Nathan	2	03.59	
Bill Walch	2	07.44	

COURSE D Mens/Womens 13-16

Peter Smith		41.23
Paul McKelvie		56.31
Cathy Smith	1 hour	18.06
Smith/Truman	1	23.33
Sue Perry	1	36.05
Wayne Black	1	49.25
Yvonne McKelvie	1	52.56
Roger Stone	3	00.00

COURSE E Mens/Womens Under 12

C Barkle		21.21
Amy Lee		28.13
G Lucas		38.27
Rita		41.45

The next event will be held on the Tuki Tuki River bank at Waipukurau on Sunday the 8th July 1990 starting at 11.30 a.m.

Setters Report: McNEIL

24 June

Did you know that they hand wash the bulls before a sale ? I didn't. Did you know that you could see two controls from the start/finish area ? I didn't. Did you know that you can drive to within easy walking distance of most of the control sites on McNeil ? I did. We also discovered a new owner to half of the McNeil map, the mountain part is a separate farm from the 'flat' areas.

Somehow during the course setting we forgot to think about what you might see while you were not running. The control high on the hill made a good spectator control, (thanks to Ted for the binoculars) as we watched the runners struggling up to it, across to it, down to it, depending on their route choice. The other visible control was the last control on the A course, which was noted by some of the runners. Having seen it from the start/finish turned out to be a disadvantage for some, they let their concentration lapse, because they 'knew' where it was, and then couldn't find it.

Thanks Stewart for hopping in and out to open and close the gates, and the course vetting.

David Fisher.

8-7-90

Setters Report on Central Map Orienteering

Setter: Eric Dunbar

Vetter: Bruce Perry

Little did I know that when I had an idea to produce a small map for the locals down in CHB to use that I would be asked to organize an event for the club on it.

The powers that be (Stewart) approached me one day asking if I would consider running an event on the Central Map without much hesitation 'Yep, sure can't be much different from running an event for the cubs'

The courses that were set, were with Club Relays in mind, however, with no advertising that it was to be the relays we had to change our minds at the last moment and run it as an ordinary Club Event, hence the lack of B and A course competitors, however, the C course was enjoyed by 15 different competitors whether in groups or by lone participants, with the comments that it was very enjoyable, which is good to hear.

The thing that I've noticed with the courses set for today is that there were no DNF's, which raises the question, 'Were the courses to easy?'

In hindsight I think now that I should have kept the B course on one side of the river as it looked like the challenge of getting wet on the day was too much for most that would normally have ran a further distance??!

Anyway the day was enjoyed by all I hope, thanks to Bruce Perry for doing the sums, to the Lee's and Yvonne McKelvie for collecting controls.

Thanks to all who attended

Eric

P.S Thanks to Fiona for typing this.



HAWKE'S BAY ORIENTEERING CLUB

NEW ZEALAND

P R Watson
9 Nelson Street
Waipukurau
Phone [0728] 88208
9th July 1990

RESULTS 'CENTRAL' SUNDAY 8th JULY 1990

Eric Dunbar and Bruce Perry set the Hawkes Bay Orienteering Club event held on the Club's new map at Waipukurau.

Several competitors had unintentional swims due to a possible route choice through the Tuki Tuki River.

A Course 5.7 km

Peter Watson	38.05
Dave Fisher	57.23
Stewart Hyslop	57.33
Wayne Lee	60.05
Paul Jarvis	69.52

B Course 3.6 km

Brian Crawford	54.08
Bill Walch/Leigh Clark	62.30
Margot Young/Max McEwan	78.20
Yvonne McKelvie/ Catherine Lee	117.00

C Course 1.7 km

Catherine Lee	17.00
Dave Smith	20.44
Caroline Watson	23.20
Amy Lee & Mum	24.05
Andrew Dunbar	26.46
Yvonne McKelvie	27.14
Diane Lucas	28.57
Toynbee gp	29.00
Wayne Black	32.09
Paul McKelvie/ Alexander Davidson	33.14
Fiona & Kerry Dunbar	33.17
Stone Family	44.45
Cathy Dixon	47.27
Perry Family	56.49

Score - Maximum Points 700

	<u>Time</u>	<u>Points</u>
Peter Watson	37.19	650
Diane Lucas	73.45	245
Mac & Ngaire Fisher	118.00	(75)

The next event will be a "1990" event to be held at the A & P Showgrounds on Sunday 22nd July with start times between 10.00 am and 2.00 pm.

This event came onto the fixtures list as our contribution to the 1990 celebrations. We applied for, and were given, \$200 for map production costs and publicity.

The mapping was an enjoyable exercise. Being so close to home I was able to work on it for as long as I felt so inclined, when I wanted to. The base map was a photographic enlargement. I spent a good deal of time on all the detail in an attempt to produce the perfect map, but alas, putting out the controls on the day, there were two mistakes just standing there shouting at me !!

We decided to spend \$100 on newspaper advertising, opting for lots of small ads in all sorts of columns, 'Lost & Found' would seem appropriate don't you think? All radio stations were given a community notice. Cathy Dickson of the "Leader" visited us at the previous event, and turned out a wonderful front page article on our sport, with a plug for the 'Showgrounds'.

Initially I had just thought of the occasion as a club event with a few new people coming out of the woodwork. However as it drew nearer the realisation dawned that we could have several hundred new participants taking part. With this in mind club members were asked to help if needed. You certainly were. Thanks go to all who helped make this the wonderful day it was, and to whoever or whatever gave us such glorious weather conditions. It is rare to be able to walk around in shorts and vest in the middle of July in Hawkes Bay.

With regard to the results, although I had a position on the master plan for a clipchecker, nobody actually did it on the day. Dave Smith and I did it on Monday evening with a dramatic effect on the provisional results. Congratulations to Sharon who won the B course, and is the only one to my knowledge who took the water route choice across the lake. Apologies to A course. We didn't collect all the maps for marking, so a fair comparison could not be made.

I think it is worth noting how on an area like this (all flat, stacks of detail, about 400m X 500m) you can provide a 1km course which can take beginners about 40mins to complete.

Thanks also go to the A & P Society for allowing us to use their grounds, for gratis on this occasion. Normal policy is to charge \$250 per day !! The only chance we have of a 'freebie' is to be able to latch onto another community project similar to '1990', 'Come Alive' etc.

Stewart.

THE 1990 ORIENTEERING EVENT

HB A&P SHOWGROUNDS 22JULY

Setter, Mapper: Stewart Nyslop

A	Course (Line/Plot)		1.7km
	Dave	Smith	43.45 m1
	W	Lee	18.32 m2
	Peter	Watson	20.40 m2
	Mac&Ngair	Fisher	48.13 m2
	Dave	Fisher	20.32 m3
	Maurice	Lloyd	21.30 m3
	P&	D	44.22 m3
	Geoffrey		49.49 m4
	Ben	Lee	49.49 m4
	Samual&	Daniel	dnf
B	Course (Line)		2km
	Sharon	Mardon	30.33 m0
	B	Walch	31.30 m0
	Catherine	Lee	40.50 m0
	Family	Wilson.	44.18 m0
	BE	Smith	53.59 m0
	MA	Young	58.39 m0
	Rosalie		60.02 m0
	Family	Jury	61.09 m0
	G	Prins	62.32 m0
		Crawfords	63.08 m0
	Bernice&Tom	Fail	35.04 m1
	Philip	Mardon	35.34 m1
	Family	Cook	43.18 m1
	KO'Shea	Walch	44.17 m1
	Diane	Lucas	51.29 m1
	MSmith, R	Ricketts	59.44 m1
	Matthew		60.10 m1
	Alan	Burke	41.22 m11
	N	Hudson	52.30 m11
	Paul	Kerr	33.21 m2
		Barnsley	49.14 m2
	C	Broderick	27.41 m3
	Yvonne	McKelvie	47.39 m3
	Wayne	Black	65.23 m3
	Linda	Lloyd	25.51 m4
	M	Reeve	37.47 m4
	Rodger	Burn	62.20 m4
	Paul	McKelvie	62.37 m4
	Family	Nairn	58.13 m5
	M	Tweedie	47.12 m6
	Bruce	Perry	18.38 m7
	Sue	Perry	49.29 m7

C	Course		1.6km
	Bruce	Perry	9.39
	Peter	Watson	9.42
	Avison	no.1	12.00
	Dave	Fisher	13.17
	Bill		13.50
		Leigh	18.15
	M	Reeve	20.34
	M	Tweedie	21.45
	Avison	no.2	22.33
	Mr.	Fisher	24.41
	Solomon	Ladies	25.33
	Melissa		25.52
	Avison	no.3	26.03
	Family	Ferris	26.04
	John	Irving	27.14
	Gareth	Aplin	27.15
	Family	Cook	28.38
	Mike	Abraham	28.55
	Raewyn	Ricketts	29.06
	Megan	Smith	29.06
		Andrews	29.38
	Wayne	Black	30.07
	Carl		31.28
	Sarah&	Christine	31.47
	N	Hudson	32.03
	Thornton&	McDonld	32.17
		Barnsley	33.37
		Kinney	34.21
	Family	Roach	34.56
		Tuohy	37.46
	Bernice&Tom	Fail	41.18
		Fisher	44.11
		Davidson	52.02
	Akina	Cubs	60.29
	S	McKenna	30.19 1w
	Paul	McKelvie	30.43 1w
	Rodger	Burn	31.44 1w
	Solomon	Boys	20.33 10w

D	Course		1km
	Mark	Reeve	10.58
	Anita	Lloyd	11.08
	Karen	O'Shea	11.42
	Tony	Walch	11.42
	Meredith	Tweedie	11.45
	Family	Solomon	12.18
	Family	Wilson	12.24
		Haden	13.05
	Solomon	Boys	13.22
	Anne	Potter	13.34

Perrin	Denver	13.59
Anthony	Lloyd	14.17
Samual&	Daniel	14.33
Gareth	Aplin	14.39
John	Irving	14.45
Richard&Alison	Cook	15.03
Sarah&	Christine	18.14
Matthew		18.51
	Avison	18.55
Brendan	Lloyd	19.26
Rosalie		19.31
Karen		19.51
Family	Jury	19.56
	Davidson	22.19
Jean		22.48
	Roach	23.06
G	Prins	24.19
Family	Scott	26.40
	Holmden	28.37
Geoffrey		29.51
Alf	Brunt	31.03
IW	Tom.Cubs	31.09
William	Tom.Cubs	31.10
	Kyle	31.12
Paul	McKelvie	31.23
Akela	TomcanaCubs	31.25
Sylvia	McKenna	19.45 lw
Group	Crawford	24.44 dnc

Abbreviations

ml	missed one	control
lw	one wrong	clip/control
dnc	did not	clip
dnf	did not	finish

Next event

Ie Mata Park (gates car park)
 5Aug90 10.30till 2pm

When asked would we do the event on the 5th August at Te Mata I thought sure thats OK, it was month ahead and just a club event, so wouldn't need a lot of planning.

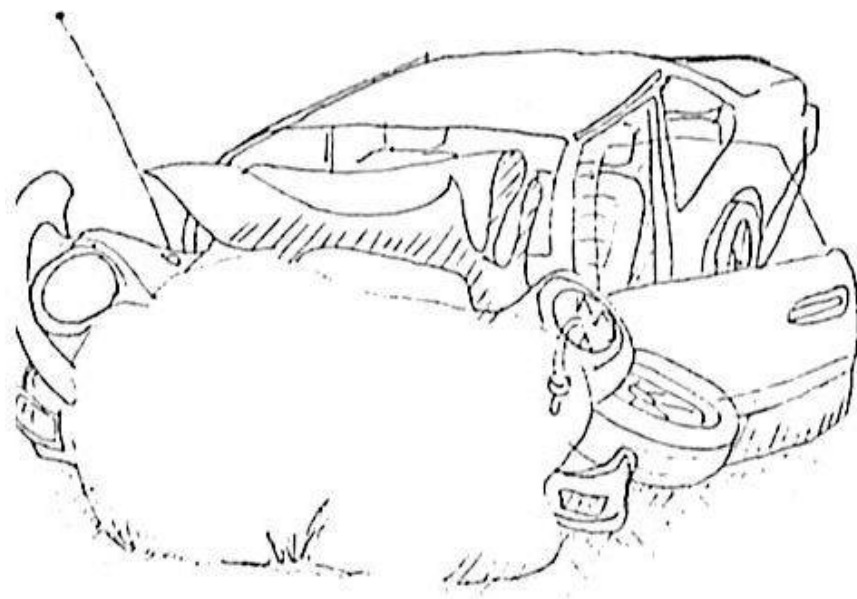
About three weeks before the event Ted rings up - "Ah, I've invited the tramping clubs and the Search and Rescue blokes to do a navigation exerise, could you please do a course for them? It needs to have length but easy control sites." I say "Can do - it's all good FR." Perhaps it's time I started thinking about where we are going to start and how many courses we need to plan.

Then came the promotion at the showgrounds - what seemed like hundreds of people, and lots of them said that was fun, when is the next event ? Help - that's us at Te Mata, we will need a couple of courses suitable for beginners and we will have to start at the main carpark. Mmmm better plan five courses, two for beginners, two for club members and one for Ted !

Friday night after a hurried trip to the nearest photocopier all was ready. A couple of hours checking on Saturday afternoon saw control sites confirmed and the more accessible controls put out.

Sunday dawned and we rushed to get the rest of the controls out and set up the start-finish, by 10:30am - we made it, just. The first half dozen people had already arrived and were waiting to start. It was the busiest event Philip and I had ever run and many thanks to those who helped us, especially with the finish and coaching of new folk. Also those who helped get in the controls, it was much appreciated.

Sharon & Philip Mardon.



Car found wrecked

Hastings police today recovered one of a dozen cars stolen throughout Hawke's Bay over the past week - at the bottom of a cliff near Havelock North. An orienteering group found the mangled wreckage of the 1984 Toyota Sprinter during a walk in the Te Mata Peak area. Senior Sergeant Max Jones said the car had been driven to the top of the peak and pushed over the cliff. Detectives were at the scene today finger-printing the car. It had been reported stolen from Napier on July 31.

TE MATA PARK ORIENTEERING EVENT

A large field of 86 entries tackled the variety of courses offered by setters Sharon & Philip Mardon.

The strong showing by the trampers and newcomers was a feature.

Te Mata Park Event 5/8/90-Results:

A Course	Window	3.1km		
Maurice	Lloyd	M21	37.54	
Peter	Watson	M21	39.15	
Dave	Fisher	M35	49.18	
Stewart	Hyslop	M21	57.59	
Gavin	Shing	M17	59.52	
Fiona	Sapsford	W17	72.50	
Dave	Smith	M50	75.43	
Wayne	Lee	M21	97.46	
Brian	Crawford	M50	43.56	m2
B Course	Trampers	4.4km		
Bruce	Perry	M21	47.15	
Russell	Mardon	M21	49.05	
ABacchus	Pim deMonchy	gp	55.11	
Eric	Dunbar	M21	61.40	
Dave	Fisher	M35	69.47	
Lyn	Gentry	M40	71.03	
Ross	Berry	SAR	71.26	
Ted	Sapsford	M50	74.06	
Paul	Jarvis	M40	74.49	
Nigel	Brown	M40	86.29	
Peter	Berry	HTC	87.41	
AF	Smith		90.15	
	Stevens	HTC	113.22	
Young,	McEwan	gp	124.26	
John	Berry	HTC	129.25	
Harry, Cath,	Ray	NTC	133.33	
Jim	Glass	HTC	135.12	
Sue	Pike	W21	146.09	
	Brunt	gp	224.57	
Alan	Burke	M40	92.24	wo
C	Hardie	HTC	172.07	3w
Bill	Walch	m40	dnf	m10
C Course	Line/Plot	2.5km		
Anne	Sapsford	W40	81.06	
R&L	Nairn	gp	92.24	m1
Adrian	Brown	SAR	65.22	m2
Family	Jury	gp	169.32	m3, 2w
D Course		1.6km		

AlexBacchus	PimdeMonchy	gp	21.19	
Caroline	Watson	w21	30.13	
Damon&Miles	Pedersen	gp	30.40	
Anita	Lloyd	gp	32.54	
Family	Hill	gp	33.26	
Catherine	Lee	w21	34.33	
Anthony	Lloyd	gp	34.36	
Sandy&	Fiona	HTC	35.29	
Carla&	Sarena	gp	35.48	
Paul	Kerr		37.34	
Anna	McKinley	w21	37.49	
L&R	Gentry	gp	42.37	
Family	Irving.	gp	44.51	
TonyWalsh,K	O'Shea	gp	47.32	
Yvonne	McKelvie	w40	49.37	
Haydon	White	gp	50.58	
Paul	McKelvie	M12	54.00	
Geoffrey	Lucas	gp	55.19	
Family	Robertson	gp	55.53	
Wayne	Black	M40	58.28	
Family	Ferris	gp	58.30	
M&J	deMonchy	gp	59.48	
	Ferris	gp	60.48	
L&A	Prins	gp	60.59	
	Nixon		66.49	
	Nixon	gp	67.33	
Mitch	Berrett	HTC	68.31	
Family	Barnsley	gp	68.33	
CA&KA	Thurston	HTC	68.42	
Amanda&	Lucy	gp	69.55	
Family	Fisher	gp	82.10	
Trevor	Roach	gp	83.02	
Dave	Harrington	gp	83.36	
	Alexander	gp	84.59	
G&G	Crawford	gp	69.08	m1
Crawford	Hill	gp	80.39	m1
Bill	Walch	M40	dnf	m1
R	McLaren	bikes	39.00	mountainbike
M	Bush	bikes	39.00	mountainbike

E Course 1.0km

Regan	Gentry	M13-14	17.09	
James	Watson	M3	21.58	
Robert	Marshall		24.02	
A	Cook	gp	26.00	
	Nixons	gp	29.56	
Karen&Matthew	Artemiev	gp	30.18	
Family	Scott	gp	30.19	
Rosalie	Artemiev	w12	31.34	
A&M	Potter	gp	37.25	
Ruth	Tipunu	w12	43.15	
Sue	Holmes	HTC	46.02	
J&M	deMonchy	gp	46.25	

Abbreviations used: SAR Search & Rescue, HTC Heretaunga Tramping Club, NTC Napier Tramping Club, m1 missed one control
 2w two wrong, wo wrong order, dnf did not finish

COACHING WEEKEND

AUGUST 11-12TH 1990

I had thought of using the Girl Guide camp at Omatua a year ago but due to the booking lead time (six months), missed out.

The camp had 28 participants with a wide variance of orienteering skills. The first exercise at Crohane Forest involved finding controls off a handrail, in this case the distinct forest edge, followed by a similar exercise with short-cuts for the brave.

The second exercise after lunch showed up the problems of the divergent skill levels. At one level I had an extension of the first exercise and at the other level I had a freedrawing map exercise. The biggest problem with the freedrawing exercise was the devices participants used to gain more time to memorize the map.

The freedrawing exercise worked by a pair running by memory to separate controls 180 degrees apart. The pair returned to the start point and drew a map by memory for their other partner to run to each others controls (by memory as well). By the end of the exercise the time had been cut down to 15 seconds.

The problems arose due to the time taken for the memory group to complete their exercise and as a consequence the first group thought I had forgotten about them. My solution was to get everyone to take part in the final freedrawing control pair which proved very entertaining, especially Dave Fisher running in the same direction as his partner.

We returned to the Girl Guide camp at Omatua for dinner which was organised by Catherine Lee (and Wayne?).

Some years ago Brian Crawford nailed permanent controls on the farmland surrounding Omatua which I thought would be ideal for a night event. My brief run in the daylight netted seven controls in 20 minutes so I set a time limit of one hour for the score event with one control deducted for every three minutes or part thereof over time.

With the atrocious weather conditions we only had three groups starting, but it was worth it after Wayne Lee and Sally Allison returned after 82 minutes of endeavour to register a score of zero.

in order to attract a few more starters I implied that all that was needed to win was someone to go out and get three controls. The official results are listed herewith and Catherine Lee has still not forgiven me.

	<u>Start Time</u>	<u>Finish Time</u>	<u>Elapsed Time</u>	<u>Time Penalty</u>	<u>Late Start Penalty</u>	<u>Controls</u>
Pim de Monchy Stewart Hyslop	9.10	10.31.31	1.21.31	-8	-3 = -1	10
Wayne Lee Sally Allison	9.04	10.25.53	1.21.31	-8	-1 = -1	8
Dave Fisher Yvonne McKelvie Paul McKelvie	9.00	10.31.54	1.31.54	-11	Nil = -4	7
Bruce Perry Catherine Lee Lois Naim	10.57	11.49.40	52.40	Nil	-37 = -29	8
Bill Walch Leigh Clark	11.00	11.54.51	54.37	Nil	-39 = -37	2

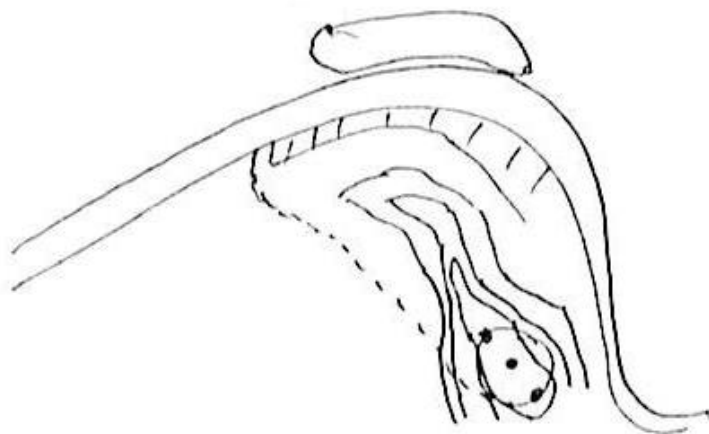
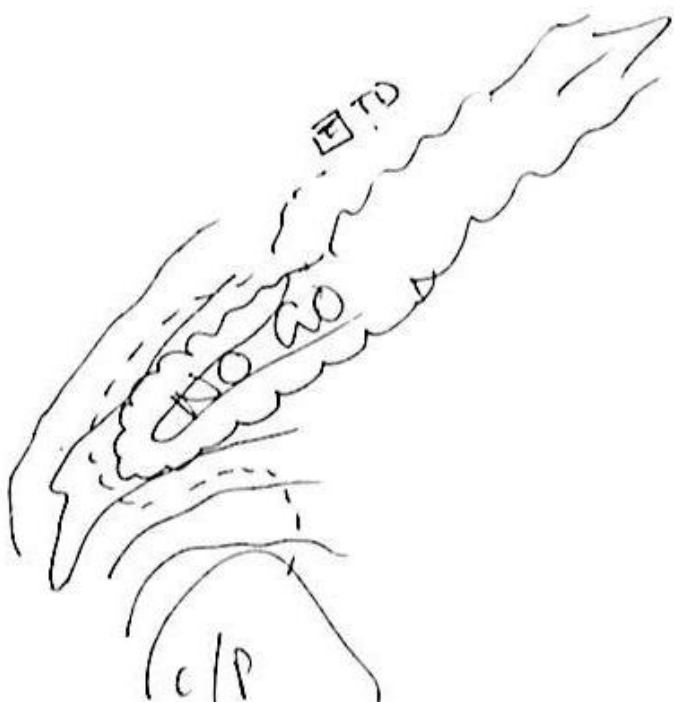
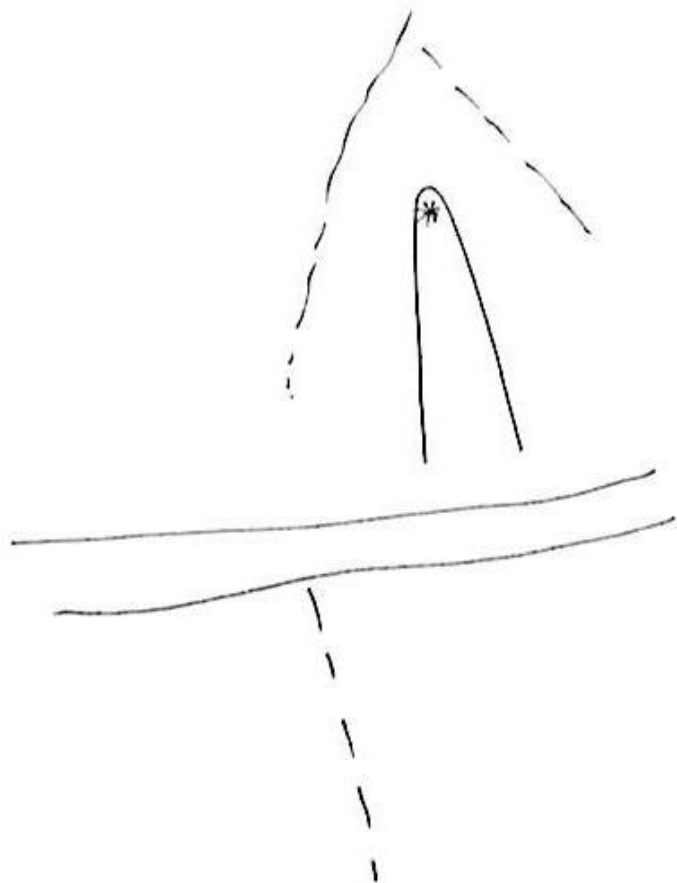
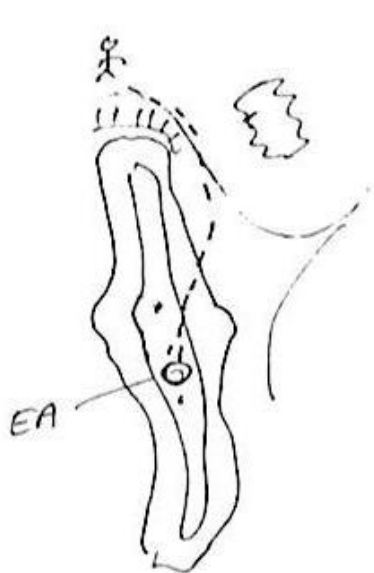
The final day was spent on McNeil carrying out a contour exercise in pairs (and by memory for those that were keen). The final exercise was a dead end relay which involved a question and three possible answers. The participants had to run by memory to the control representing the correct answer. I have still not forgiven Bruce for thinking Australia won the Rugby World Cup in 1987. My calculator confirms $32^{\frac{1}{2}} = 2$ but I wasn't sure at the time so you were spared that question.

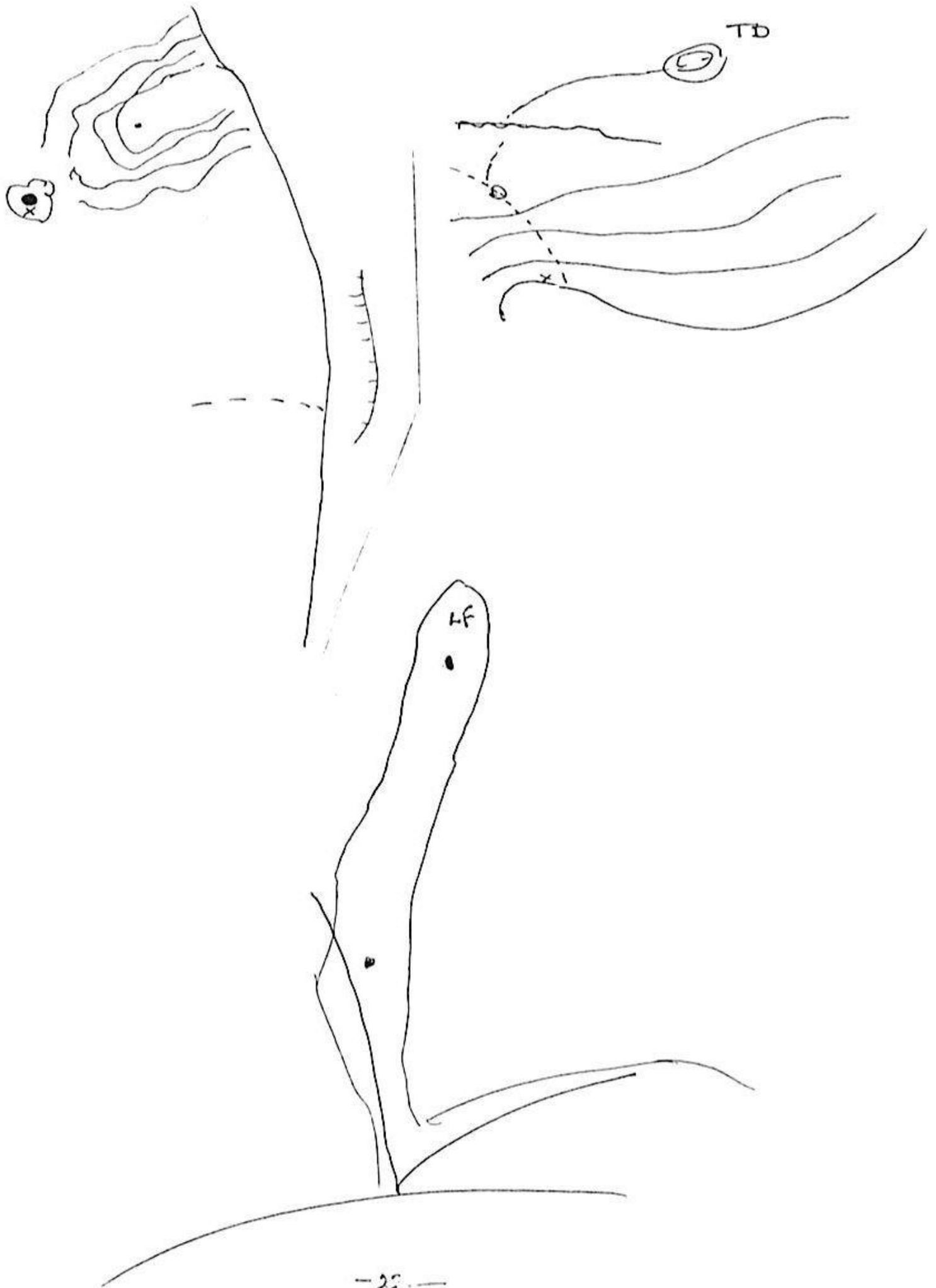
Thank you to Catherine Lee and helpers for organising the catering and to Bruce for assisting.

The only change I would make is to have one coach per ten participants which would mean three of us coaching and consequently being able to spend more time with the participants.

Peter Watson

THESE, BELIEVE IT OR NOT, ARE MAPS, DRAWN FROM MEMORY AND ACTUALLY USED TO NAVIGATE TO A CONTROL DURING THE CONVICTION AT: CHOMPALE, CAN YOU RECOGNISE THE AREA!?





This year we needed something different for the night relays - well, how about swimming ? Going past Frimley park on Friday all I could see was various wee lakes - not to worry, I am told we will have the relays NO MATTER WHAT ! (you always get those crazies who will want to take the plunge - apparently !)

Saturday's here and the sun is smiling, the birds are singing and the sky is blue by the time I put the code plates out around the park, Lindisfarne and Girl's High, the ground isn't too bad

The sun wnet and the people came to the gym at the HGHS, a lot of new faces to me, enough to make up 8 teams. The teams were drawn and the first runners were given their control number.

Each team had 3 legs, (long, medium, short). One leg runner would go out and get the code of one or two controls, write it on the clipcard and returning the the gym pass the clipcard onto the next runner, who was then told which control(s) to find. Each runner had 6 legs to do.

Two teams got rather competitive and realised that they were doing the same controls, there were six different combinations, and a protest was made that one long leg runner was following another, so I did a wee bit of juggling to change their controls around. But that didn't stop Eric D. standing on top of a plate so that it wasn't visible to Brice P. Catherine and Fosalie were harrassing various long leg runners upon their departure.

Well, finally we had a team who had done all 18 legs and were rather jubilant at their victory, until a check of their clipcard discovered that a code was wrong - no this can't be, but yes it is, maybe someone's memory is not as good as it was, maybe next time someone will take a pen out with them !

The evening was rather fun and proved this event as very social and (thank goodness) it actually workes. I look forward to running the same type of relay at the christmass event - should be fun, bring your swimming gear !

Thanks to Dave Fisher and the Cook's for bringing in the plates and to mum and dad for helping me understand what I was actually doing, and to the three legged dog for making me run faster.

Fiona Sapsford
(Smile Pak)

NIGHT ORIENTEERING RELAY: FRIMLEY

Results of the night relay held at the HGHS on the evening of 19Aug90 are below. Course setter Fiona Sapsford introduced the club to a new form of relay. Each team member visited six or more control sites but only one or two before handing on to the next runner. This ensured plenty of recovery time before tackling the next leg. a = long, b = medium, c = short course. ml = missed one clip, lw = one wrong.

1 Sharon	Mardon	b	Dave	Fisher,	a	Robertson	group	c	2h 2m13s
2 Philip	Mardon	a	Kerr, Abraham	Lincoln	b	A&E	Cook	c	2h 4m20s
3 Paul	Jarvis	a	C&M	Barnsley	b	A&E	Cook	c	2h 4m29s
4 Catherine	Lee	b	Eric	Dunbar	a	Campbell	group	c	2h10m42s
5 Wayne	Lee	a	Brian	Crawford	b	X&F	Leigh	c	2h14m33s
6 Crawford	group	c	T	Barnsley	a	Smith	group	b	2h39m42s
7 Rosalie	Adlam	b	Bruce	Perry	a	Dave	Smith	c	1h51m45s1w
8 Stewart	Hyslop	c	Gavin	Shing	a	Andrew&	Adam	b	2h24m43sml

The next event is in Guavas Forest on 2Sept. at 11.30am.

12 O.Y. POINTS	GRANULES O.Y. 1	SMEDLEY O.Y. 2	McNEIL O.Y. 3	TOTAL
M 17 - 39				
Peter Watson	24.00	25.00	22.41	71.41
Bruce Perry	10.00	25.00	25.00	60.00
Stewart Hyslop	17.03	15.45	25.00	57.48
Eric Dunbar	16.03	25.00	14.40	55.43
David Fisher	14.57	13.53	25.00	53.10
Maurice Lloyd	25.00	0.00	22.85	47.85
Gavin Shing	10.00	13.96	15.13	39.09
Wayne Lee	12.34	10.00	11.76	34.10
Doug Matheson	0.00	13.48	0.00	13.48
M 40+				
Brian Crawford	25.00	25.00	24.50	74.50
Paul Jarvis	25.00	23.42	25.00	73.42
Dave Smith	18.62	16.89	19.12	54.63
Philip Mardon	23.06	21.18	0.00	44.24
Ted Sapsford	25.00	0.00	18.19	43.19
Martin Pike	17.79	20.84	0.00	38.63
Alan Burke	10.00	0.00	19.29	29.29
Nigel Brown	0.00	14.53	0.00	14.53
Robin Nairn	0.00	0.00	0.00	0.00
W 17 - 39				
Caroline Watson	22.67	25.00	23.05	70.72
Catherine Lee	15.34	23.97	24.86	64.17
Rosalie Adlam	19.24	18.28	22.95	60.47
Linda Lloyd	24.51	0.00	25.00	49.51
Sharon Mardon	25.00	23.01	0.00	48.01
Diane Lucas	12.12	10.00	11.66	33.78
Sue Pike	17.14	15.91	0.00	33.05
Fiona Sapsford	0.00	17.91	0.00	17.91
W 40 +				
Anne Sapsford	24.16	25.00	25.00	74.16
Diane Kyle	0.00	18.96	24.74	43.70
Lois Nairn	25.00	16.33	0.00	41.33
M 13 - 16				
Peter Smith	25.00	25.00	25.00	75.00
Paul McKelvie	0.00	0.00	18.31	18.31
Brian Nairn	0.00	10.00	0.00	10.00
Rowan Sapsford	0.00	0.00	0.00	0.00
Paul Nairn	0.00	0.00	0.00	0.00
W 13 - 16				
Cathy Smith	0.00	0.00	25.00	25.00
M 12				
Geoffrey Lucas	13.27	17.60	25.00	55.87
Carlos Burke	25.00	25.00	0.00	50.00
James Watson	21.79	24.90	0.00	46.69
Andre Burke	0.00	24.90	0.00	24.90
W 12				
Amy Lee	22.49	25.00	25.00	72.49
Anita Lloyd	25.00	0.00	0.00	25.00

UPDATE	O.Y. PTS	O. Y. s ENTERED	HANDICAP		REVISED H/CAP
			TOTAL	PLACING	
M 17 - 39					
Peter Watson	71.41	3	49.41	3	2
Bruce Perry	60.00	3	51.00	1	9
Stewart Hyslop	57.48	3	48.45	4	9
Eric Dunbar	55.43	3	48.40	5	10
David Fisher	53.10	3	49.53	2	12
Maurice Lloyd	47.85	2	22.85	9	1
Gavin Shing	39.09	3	48.09	6	10
Wayne Lee	34.10	3	47.76	7	13
Doug Matheson	13.48	1	24.48	8	12
M 40+					
Brian Crawford	74.50	3	49.50	3	9
Paul Jarvis	73.42	3	50.42	2	9
Dave Smith	54.63	3	51.01	1	7
Philip Mardon	44.24	2	23.18	7	3
Ted Sapsford	43.19	2	25.19	6	7
Martin Pike	38.63	2	28.84	5	6
Alan Burke	29.29	2	31.29	4	9
Nigel Brown	14.53	1	22.53	8	9
Robin Nairn	00.00	0	00.00	9	15
W 17 - 39					
Caroline Watson	70.72	3	54.05	3	3
Catherine Lee	64.17	3	65.83	1	4
Rosalie Adlam	60.47	3	54.23	2	5
Linda Lloyd	49.51	2	26.00	5	1
Sharon Mardon	48.01	2	23.01	8	2
Diane Lucas	33.78	3	47.66	4	13
Sue Pike	33.05	2	23.91	7	10
Fiona Sapsford	17.91	1	25.91	6	9
W 40 +					
Anne Sapsford	74.16	3	51.00	2	9
Diane Kyle	43.70	2	57.70	1	4
Lois Nairn	41.33	2	16.33	3	4
M 13 - 16					
Peter Smith	75.00	3	50.00	1	9
Paul McKelvie	18.31	1	25.31	2	7
Brian Nairn	10.00	1	25.00	3	15
Rowan Sapsford	00.00	0	00.00	4	1
Paul Nairn	00.00	0	00.00	4	3
W 13 - 16					
Cathy Smith	25.00	1	25.00	1	9
M 12					
Geoffrey Lucas	53.97	3	63.60	1	9
Carlos Burke	50.00	2	25.00	4	9
James Watson	46.69	2	28.90	2	2
Andre Burke	24.90	1	25.90	3	1
W 12					
Amy Lee	72.49	3	55.00	1	3
Anita Lloyd	25.00	2	00.00	2	9

New Zealand Orienteering Federation (Inc.)

8 AUG 1990

NATIONAL JUNIOR SQUAD

Michael Anderson	D	Kirsten Ambler	NW
Darren Ashmore	C	Mary Rutledge	W
Appie Borren	KH	Alison Stone	NW
Thur Borren	KH	Antonia Wood	HV
Aidan Boswell	SA		
Rolf Boswell	SA		
Greg Dryden	KH		
David Farquahar	R		
David McCarthy	S		
Bruce McLeod	D		
Simon Teahan	RK		
Philip Wood	HV		

WORLD CUP 1990

Greg Barbour	Katie Fettes
Kevin Ireland	Marquita Gelderman
Rob Jessop	Jo Quest
Alistair Landels	Tania Robinson
Bill Teahan	
Bryan Teahan	

NZOF ENTRY FORM. PLEASE USE BLOCK CAPITALS THROUGHOUT

ENTRY FOR 1990 AUCKLAND CHAMPS. (EVENT) ON 14/16 Oct. (DATE)

Address : Telephone : (home)
 (bus)

Surname	First Name	Club	Grade	Birth Year	Entry Fee
Total Fee \$					

CHECK DETAILS OF EVENT FOR CLOSING DATE OF ENTRIES



HAWKES BAY ORIENTEERING CLUB

"PUKENUI" - MINI MOUNTAIN MARATHON

NOVEMBER 25TH, 1990. PUKENUI STATION (30 minutes from Waipukurau)

MAP: ONGA ONGA (NZMS 260 SHEET U22) SCALE: 1:50000 20m contours

TERRAIN: Farmland, including scrub-covered high country & steep gorges.

Course details:

Course	Estimated Winning Time	Difficulty
A	150 - 170 mins	Hard
B	110 - 125 mins	Moderate
C	60 - 80 mins	Fair

Registration: from 9.00am
 Event briefing: 9.50am
 Mass start: 10.00am
 Course closure: 4.00pm



Event Fee: \$14.00 (includes map at \$9.00)
 Cheques payable to HBOC
 \$6.00 (if you supply the map.)

Those competitors supplying their own map should report to registration early to allow for pre-marking of their course.

Closing date for entries: November 15th, 1990
 Entries should be sent to Bruce Perry, 12 Johnson St, Waipawa.

Name	Address	Course	Fee

Total: _____

=====

NZFP FOREST .990 NATIONAL ORIENTEERING CHAMPIONSHIPS

SPONSORED BY NZFP FORESTS LIMITED

Date: Sunday 21 October 1990

Map: Mamaku (new map) 23-29 yr old Douglas Fir Trees -
 Runnability slow due to closeness of trees and low branches. Visibility restricted with forest quite dark. The area is very much gully/spur with scattered hills and knolls with some large gullies running through the map. The edges of the gullies may be lined with cliffs or boulders, while many of the hilltops have rocks or stoney ground - sounds like fun!

Scale: Courses 1 - 5 1:15,000 Courses 6 - 15 1:10,000

Grades:	Course: 1 M21E 2 W21E 3 M19-20A, M21A, M35A 4 M17-18A, M40A 5 W35A, M45A 6 M50A 7 W19-20A, W21A, W40A, M15-16A 8 W17-18A, W45A, M55A, W15-16A	Course: 9 W50A, W55A, M60A, M65A 10 M21B, M35B 11 W21B, W35B, M17-20B, M40B, M45B 12 W17-20B, W40B, W45B, W50B 13 M13-14A, M21C, W21C 14 W13-14A 15 W12A, M12A, M13-16B, W13-16B
----------------	--	---

Ages as at 31st December 1990

Fees: Senior (19+) \$18.00
 Junior (18 and Below) \$ 8.00
 Family Max \$50.00
 Cheques payable to Pinelands Orienteering Club



NZFP FORESTS LIMITED
 Kinleith Forest Region

Entries: Send entries to: Mike Grayburn
 20 Riverview Street
 PUTARURU

Closing Date: 1 October 1990 (late entries double normal entry fees)

REMEMBER - Those travelling to Australia send in your entries BEFORE leaving!

FAMILY NAME	CHRISTIAN NAME	CLUB	GRADE	FEES
TOTAL				

Postal Address: **Phone No:**

.....

.....

Start Preferences:

1990 NATIONAL CLUB RELAY CHAMPIONSHIPS

Sponsored by Tasman Forestry Limited



Date: Monday 22 October 1990
 Map: Crater Block (near pristine condition - used once)
 Scale: 1:15000 C.I. 5m
 Runnability: 90% fast forest, 10% slow (native bush, prunings)

Grades: Men's Open Mixed A (Long, Medium, Short)
 Women's Open Mixed B (Long, Medium, Short)
 Men's 35+ Junior Mixed (15-18)
 Women's 35+ Junior Mixed (14 and under)
 Men's 45+
 Women's 45+

Restrictions: Ages as at 31 December, 1990
 Only 1 M21A in Mixed A
 No M21A, W21A or M35A in Mixed B
 All members of a team must be members of the same club to qualify for places.

Fees: \$10 per Senior
 \$5 per Junior

Cheques should be payable to Rotorua Orienteering Club.

Entries: Send entries to:

R. Simpson
 18 Te Ana Place
 ROTORUA

Closing Date: 1 October 1990

Notes: Names and running order may be finalised at registration prior to 3pm, Sunday, 21 October.

We will endeavour to cater for individuals. Please state your preferred relay grade and leg.

Team Name: Phone:
 Grade: Club:

Name	Leg*	Grade

Individuals (We will try to put you into a team)

* For mixed teams indicate leg length (long/medium/short)

1990 FAMILY RELAYS

The 1990 Family Relays will be held on Saturday October 20.

Note: to run in the relays you do not have to be a real family, there is a separate competition for pretend families. Please indicate on your entry form which type of family you are.

Map details

Map: Raroa
Scale: 1:10,000
Contour interval: 5 metres
Terrain: immature rolling pine forest
Previous uses: 1989 CDOA champs, 1990 CDOA OYS
Course setter: Tony Trass
Vetter: Athol Lonsdale
Enquiries to: Tony Trass (074-89876)

Leg details

Each team will consist of three members.

<u>Leg#1</u>	<u>Leg#2</u>	<u>Leg#3</u>
<u>Description</u> easy	<u>Description</u> medium	<u>Description</u> difficult
<u>Distance</u> 1.5 km	<u>Distance</u> 3.0 km	<u>Distance</u> 4.5 km
<u>Winners time</u> 10-12 mins	<u>Winners time</u> 25 mins	<u>Winners time</u> 40 mins

Entry fees

Junior (18 and under) \$3.00
Senior \$5.00

Entries to

Family Relays
Taupo Orienteering Club
PO Box 666
TAUPO

Entries close

October 1

FAMILY RELAY ENTRY FORM

TEAM NAME _____

RUNNERS LEG#1 _____

LEG#2 _____

LEG#3 _____

FAMILY OR PRETEND FAMILY RELAY _____

ADDRESS (FOR RESULTS) _____

CONTACT TELEPHONE NUMBER _____

ENTRY FEE ___ JUNIORS AT \$3.00 TOTALLING _____

 ___ SENIORS AT \$5.00 TOTALLING _____

TOTAL FEE _____

H.B.O.C. COMING EVENTS

=====

Date	Venue	Setter / Vetter
Sep 2	>>> D.Y.4 - Gwavas (Sign posted from State Highway 50.)	Doug Matheson / Brian Crawford
Sep 15-16	C.D.O.A. Champs	Rotorua
Sep 16	Bluff Hill	Allan Burke
Sep 30	Whirinaki (Sign posted near Whirinaki mill)	
Oct 7	Te Mata (Special event for a church group. Club members welcome.)	Dave Smith
Oct 14	>>> D.Y.5 - Seafield Road (Interclub challenge with Red Kiwis.)	Peter Watson / Neil Lawrence
Oct 20-22	N.Z. Championships	Rotorua
Oct 20	- Family Relays, Raroa	
Oct 21	- Individual Champs., Mamaku	
Oct 22	- Club Relay Champs., Crater Block	
Oct 28	Smedley (Sign posted from state highway 50.)	Eric Dunbar
Nov 11	>>> Club Championships - Esk (Sign posted from Napier - Taupo Road.)	Maurice Lloyd / Wayne Lee
Nov 20 (Tue)	A.G.M.	
Nov 25	Mini Mountain Marathon Pukenui Station	Bruce Ferry / Russell Ferry
Dec 9	Christmas event Probably on Tukituki map.	Fiona Sapsford

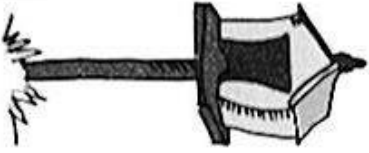
(The >>> symbol highlights Orienteer of the Year events.)

Club O.Y. events start from 11.30 am and close at 1.30 pm.
All other club events start from 10.30 am and close at 1.30 pm.

All events are advertised in the Personal columns of the Herald Tribune and Daily Telegraph on the day before the event, as well as the 'Coming Soon' column in the Hastings 'Leader' the Thursday before the event.

Listen to the local radio stations for cancellations. Most unlikely if an O.Y.

ORIENTEERING. THE THOUGHT SPORT



H.B.O.C. ARCHIVES.

September 1990.

Aug 1990